

AGRICULTURAL SAFETY



National Children's Center
for Rural and Agricultural Health and Safety



Farms and ranches are wonderful places for children and youth to live, work and play. However, agriculture is also one of the most dangerous occupations in the U.S., and the only worksite where children of any age can be present. This brochure can help adults find the balance between maximizing benefits and minimizing risks.

Look inside for:

- Top 5 Injury Statistics
- Top 3 Causes of Injuries & Fatalities
- Top 5 Safety Strategies
- Top 5 Injury Prevention Resources

WHO WE ARE:

The National Children's Center is one of 11 Agricultural Safety Centers funded by the National Institute for Occupational Safety and Health (NIOSH).

Established in 1997, it is located in the National Farm Medicine Center, part of the Marshfield Clinic Research Institute in Marshfield, Wisconsin. The center is the leader in setting voluntary guidelines to protect children who live, visit and work on farms.

Top 5 Injury Statistics:

A child dies in an agriculture-related incident about every 3 days

Every day, about 33 children are injured in an agriculture-related incident

Agriculture is one of the most dangerous occupations in our nation, and the only worksite in the U.S. where children of any age can be present.




The number of ag-related youth worker fatalities is higher than all other industries combined.

Many agricultural work-related injuries and deaths are associated with children doing work that does not match their developmental level

60% of child ag-related injuries happen to children who are not working

Top 3 Causes of Injuries & Fatalities:

- Fatal¹**
-  Machinery
 -  Motor Vehicles
 -  Drowning

- Non-Fatal²**
-  Falls
 -  Animals
 -  Machinery/Vehicles

References

1 Goldcamp M, Hendricks KJ, Meyers JR. (2004). Farm Fatalities to youth 1995-2000: A comparison by age groups. *Journal of Safety Research*. Vol. 35(2): 151-157.

2 NIOSH (2013). Analyses of the 2012 Childhood Agricultural Injury Survey (CAIS). Morgantown WV: U.S. Department of Health and Human Services, Public Health Service, Centers for Disease Control and Prevention, National Institute for Occupational Safety and Health, Division of Safety Research. Unpublished.

Economic IMPACT

\$1.26 BILLION

Non-fatal youth agricultural injuries cost society an estimated \$1.26 billion per year, and can wipe out an individual family farm's annual profits in just days, depending on severity.

Zaloshnja E, Miller TR, Lawrence BA (2012). *Incidence and Cost of Injury Among Youths in Agricultural Settings, United States, 2001-2006 Pediatrics*. Vol. 129(4): 728-734.

Top 5 Safety Strategies

1 Keep Kids Away from Tractors



40%

Tractors cause over 40% of accidental farm deaths of children under 15



4 out of 5 farm children regularly ride tractors

It's time to break the tradition.

It's easier to bury a tradition than a child.

www.childagsafety.org/products

2 Keep young children out of the worksite



Equipment Hazards

- Skid steers
- ATVs
- PTOs



Supervision

- Working in/around grain
- Animals
- Gates, tires, & environmental hazards

Safety Strategies: Child Care, Safe Play Areas - www.cultivatesafety.org/play

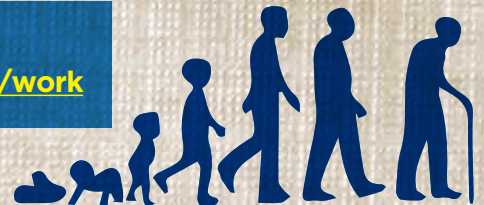
3 Ensure age appropriate work

Teen characteristics:

- Lack experience
- Impulsive
- Risk taking attitude
- Desire to prove themselves
- Susceptible to peer pressure
- Reluctant to ask questions

Work Guidelines:

www.cultivatesafety.org/work



4 Ensure environment is as safe as possible



Eliminate/reduce hazards:

Examples:

- Distractions
- Slippery/uneven surfaces
- Repetitive motion



Provide Personal Protective Equipment:

Examples:

- Non-skid shoes
- Gloves
- Hearing protection

5 Provide training for work/tasks & ensure proficiency



Model safe behaviors



Train youth to do job



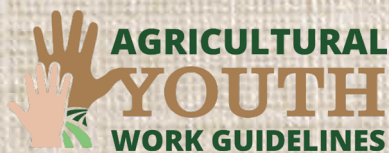
Practice until proficient



Supervise

Top 5 Injury Prevention Resources

1



Guidelines to help farm parents and supervisors assign tasks based on worker ability are available at CultivateSafety.org/work

2



Resources for creating safe play areas on farms are available at CultivateSafety.org/play

3



Agritourism resources, guidelines, checklists, and signs are available at SafeAgritourism.org

4



www.AgInjuryNews.org allows users to search for injury reports using variables like age, injury agent, year and more. Resources for preventing similar injuries are linked to the reports.

5



Visit ChildAgSafety.org for information and resources from a coalition of organizations working together to keep children safe on the farm.



Want more?

The Cultivate Safety website is designed to provide easy access to agricultural safety information and resources for farmers, ranchers, supervisors and media.

CultivateSafety.org/resources



National Children's Center
for Rural and Agricultural Health and Safety

1.800.662.6900
nccrahs@marshfieldresearch.org
Marshfield Clinic Research Institute
1000 North Oak Avenue
Marshfield, WI 54449