



Invest In Your Health

Educate. Prevent. Protect.

ASCHA- Tools of the Trade

Safety Tool Presentation – Invest in Your Health Course

Knesha Rose-Davison, MPH

Public Health Program Director

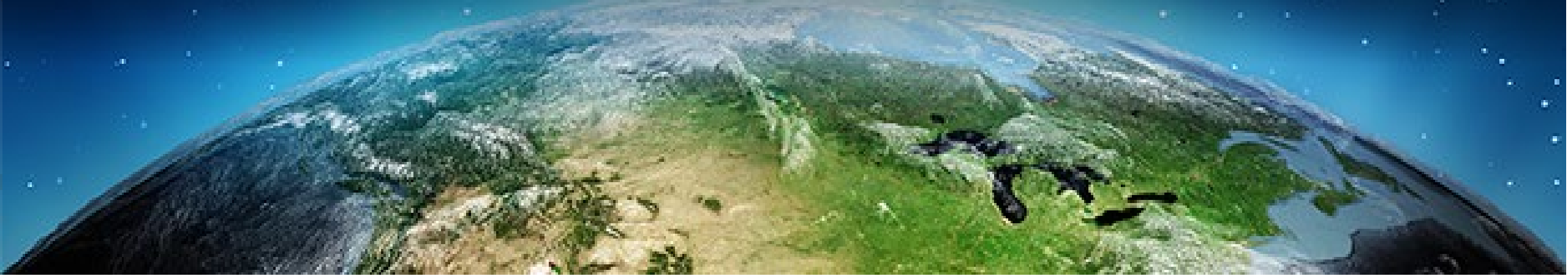


Protecting the People Who Feed the World

Protecting the People who Feed the World[®]

How we Protect:

1. Ongoing needs assessment of Ag producer needs (following Total Farmer Health)
2. Train rural health professionals across the nation
3. Establish partnerships with NIOSH Ag Centers, rural research centers, and other NPOs
4. Maintain a culture of readiness and organizational expectation to protect and respond



Adaptation of *Total Worker Health*® to Agriculture

TOTAL FARMER HEALTH

SM



Invest in Your Health: Train the Trainer Program



- ❖ AgriSafe is offering this Train-the-Trainer series to anyone who works with youth (ages 14-23 years).
- ❖ AgriSafe is committed to train safety and health professionals who wish to teach IYH trainings in their classroom. Under our open share platform, once certified, you are free to use the training materials.
- ❖ The series of modules will walk you through 6 target areas and includes an instructor guide after completing each topic. These train the trainer courses will help prepare you to teach on each of the topic areas included. You will have the opportunity to increase your knowledge and will receive an instructor guide to use with your students or young workers. The modules include On-Demand webinars, Classroom Learning Activities, as well as an Instructor Guidebook.
- ❖ IYH training modules aim to educate, prevent and protect young farmers by providing them with the tools they need to stay safe and healthy.
- ❖ These Train the Trainer courses are designed for teachers, Extension staff, 4H and FFA leaders and others who work with young adults.
- ❖ Our end goal is to build the capacity of rural educators and leaders to train young workers.

Invest in Your Health Course & Materials



- ▶ Instructor Guidebooks
- ▶ 30 minute Student Presentations
- ▶ Classroom Learning Activities
- ▶ Certified to Train on Six Topics
 - ▶ Cover Up- Head to Toe Personal Protective Equipment
 - ▶ Hazard Mapping for Agriculture
 - ▶ Say What? Hearing Protection
 - ▶ **Stay Cool- Prevention Heat Related Illness**
 - ▶ Zoonosis- Stop Zoonosis in it's Tracks
 - ▶ **New!** Cultivating a Healthy Mind: Mental Wellness for Youth
- ▶ Digital Badges Available!



<https://learning.agrisafe.org>



Ansley St Pierre

Logout



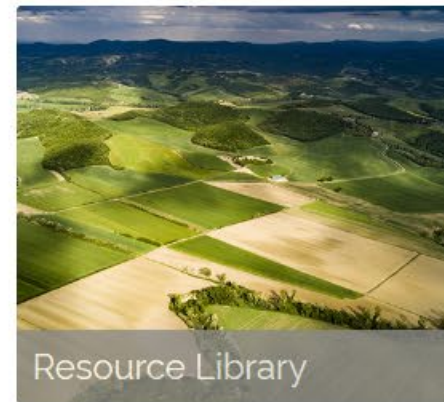
- Home
- Training Catalog ▾
- Recommended
- My Dashboard**
- FAQs
- Profile
- Cart (0 items)



Webinars



Courses



Resource Library

Quick Search

All Categories ▾

All Types ▾

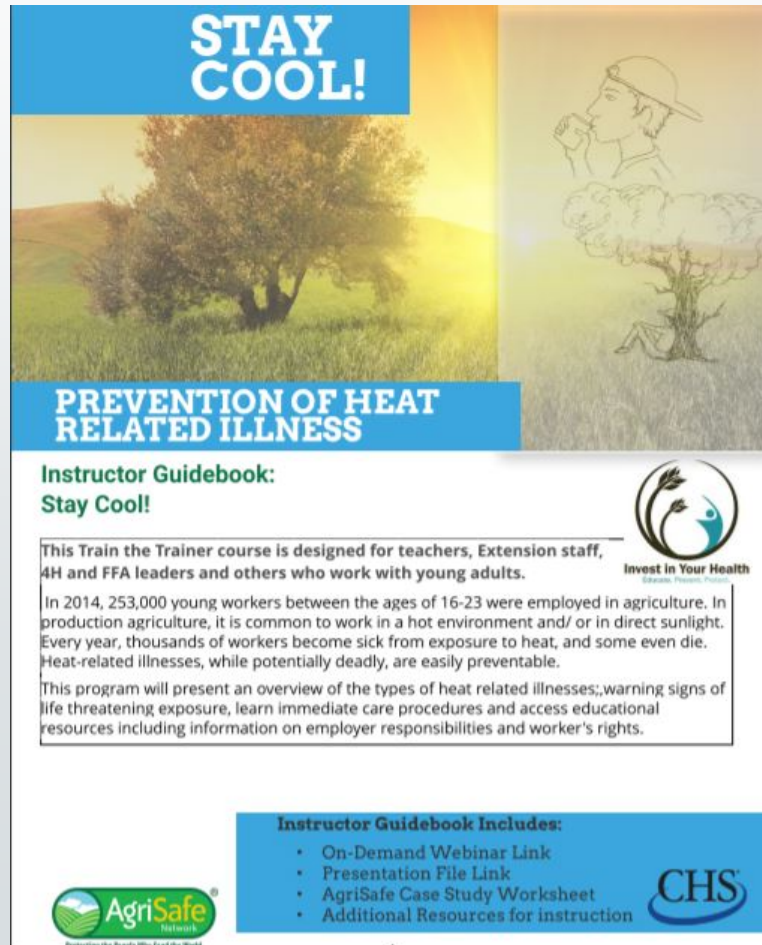
All Content Types ▾

keywords

Find

Recommended For You

DEMO: Stay Cool- Prevention of Heat Related Illness



STAY COOL!

PREVENTION OF HEAT RELATED ILLNESS

**Instructor Guidebook:
Stay Cool!**

This Train the Trainer course is designed for teachers, Extension staff, 4H and FFA leaders and others who work with young adults.

In 2014, 253,000 young workers between the ages of 16-23 were employed in agriculture. In production agriculture, it is common to work in a hot environment and/ or in direct sunlight. Every year, thousands of workers become sick from exposure to heat, and some even die. Heat-related illnesses, while potentially deadly, are easily preventable.

This program will present an overview of the types of heat related illnesses; warning signs of life threatening exposure, learn immediate care procedures and access educational resources including information on employer responsibilities and worker's rights.

Instructor Guidebook Includes:

- On-Demand Webinar Link
- Presentation File Link
- AgriSafe Case Study Worksheet
- Additional Resources for instruction

AgriSafe
Protecting the People Who Feed the World

CHS
Invest in Your Health
Safes. Proven. People.

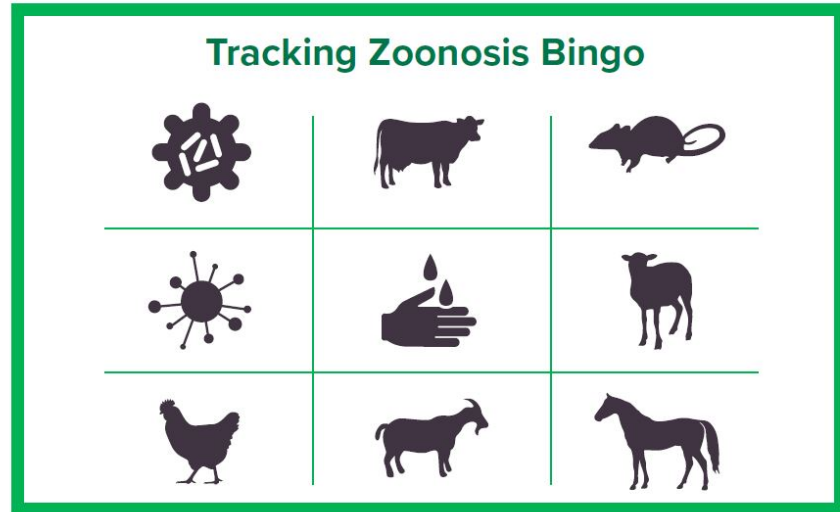
- Brief Topic Overview for Instructors
- Webinar Recording for Students
- Classroom Activities



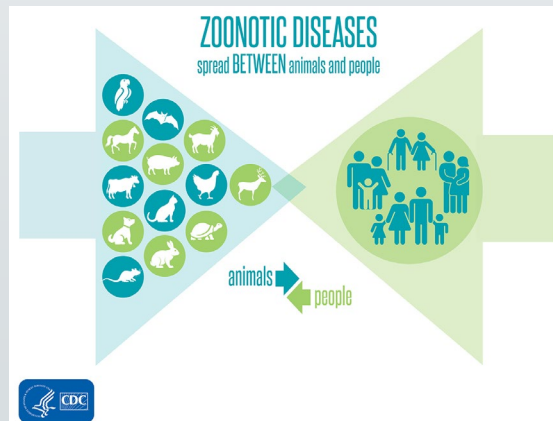
- OSHA- NIOSH Heat Safety Tool
- 5 Case Study Examples (AGRISAFE)
- Heat Illness JEOPARDY (PNASH)

- Question Bank & Answer Key
- Bonus Materials available online

Example: Stop Zoonosis in its Tracks



- Brief Topic Overview for Instructors
- Webinar Recording for Students
- Classroom Activities
 - AgriSafe-Tracking Zoonosis Bingo
 - Flash Card Activity (4- H)
 - Handwashing Experiment
- Question Bank & Answer Key
- Bonus Materials available online



Example: Hazard Mapping for Ag

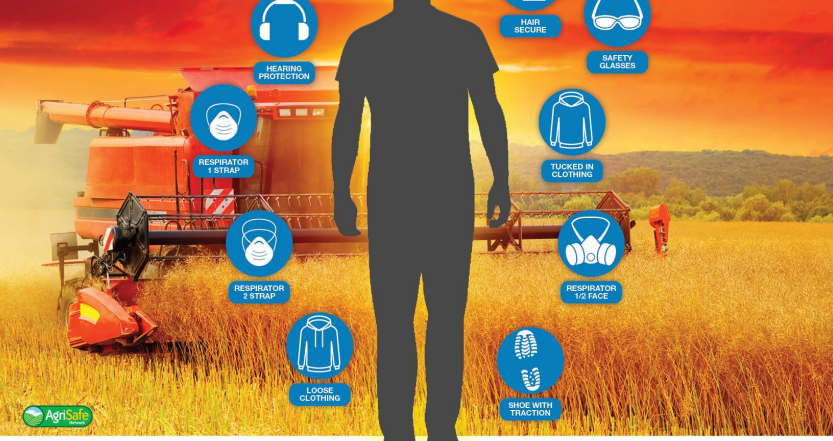
- Brief Topic Overview and Students
- Classroom Activities
 - Hazard Mapping Exercise
 - Student Lead Discussion
 - Ag Safety Fact Sheets
- Question Bank & Answer Key
- Bonus Materials available online

	Low Hazard	Med Hazard	High Hazard
Livestock Diseases Struck by Caught between			
Chemical			
Respiratory			
Ergonomic			



MACHINERY

Personal Protective Equipment



ACTIVITY INSTRUCTIONS:
 1. Examine the figure in the picture – what protective gear do you think he/she should use when working in this area?
 2. Draw a line from the protective equipment you select and place on the picture of the worker.
 3. Draw an X through the ones you did not choose.
 4. Now, on the back side of this page, write in the protective equipment you would need when working in this area.



LIVESTOCK

Personal Protective Equipment

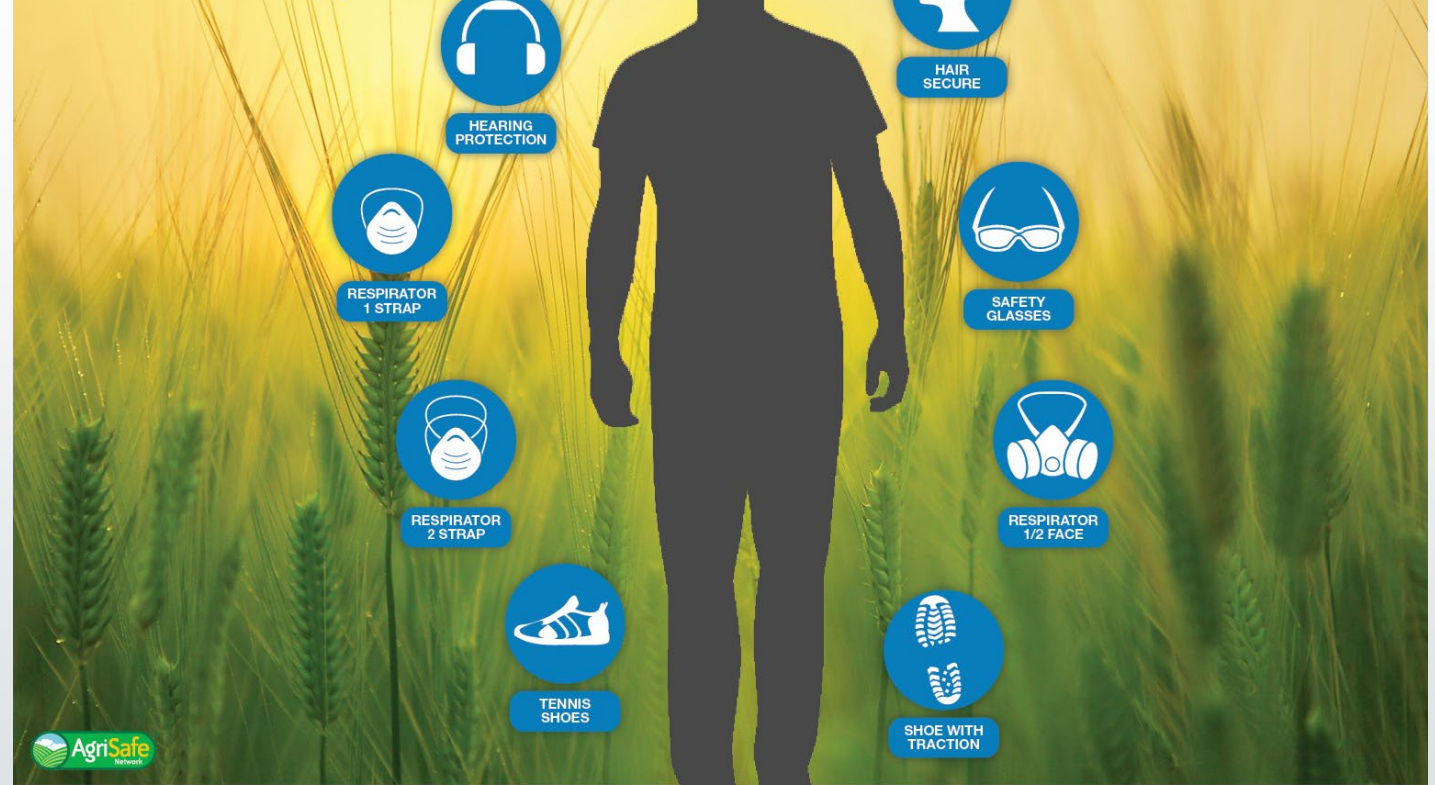


ACTIVITY INSTRUCTIONS:
 1. Examine the figure in the picture – what protective gear do you think he/she should use when working in this area?
 2. Draw a line from the protective equipment you select and place on the picture of the worker.
 3. Draw an X through the ones you did not choose.
 4. Now, on the back side of this page, write in the protective equipment you would need when working in this area.



GRAIN

Personal Protective Equipment



ACTIVITY INSTRUCTIONS:
 1. Examine the figure in the picture – what protective gear do you think he/she should use when working in this area?
 2. Draw a line from the protective equipment you select and place on the picture of the worker. **Remember:** some choices will be better than others!
 3. Draw an X through the ones you did not choose. When you are finished, be prepared to explain your choices.
 4. Now, on the back side of this page, write in the protective equipment you would need when working in this area.



Copyright 2019

Invest in Your Health Health and Safety for Young Adults



- ▶ Train the Trainer model
- ▶ Badges can be earned for all 6 of the Invest in Your Health Train the Trainer topics:
 - ▶ Say What? Protecting your Hearing
 - ▶ Cover Up! Head to Toe Personal Protective Equipment
 - ▶ Stay Cool! Prevention of Heat Related Illness
 - ▶ Stop Zoonosis in its Tracks- Prevention of Zoonosis
 - ▶ Where Y'at-Using Mapping to Define Hazards in Agriculture
 - ▶ Cultivating a Healthy Mind- Mental Wellness for Youth

Questions?

Contact Knesha Rose-Davison, MPH

- ▶ Email: krose@agrisafe.org
- ▶ Phone : 866-312-3002 OR 985-327-1627
- ▶ SUBJECT: Invest In Your Health Program

