

# DIY BACKYARD BEAN BAG TOSS GAME



IMAGES AND RESOURCES ADAPTED FROM: <https://thriftdiving.com/diy-backyard-bean-bag-toss-game/>

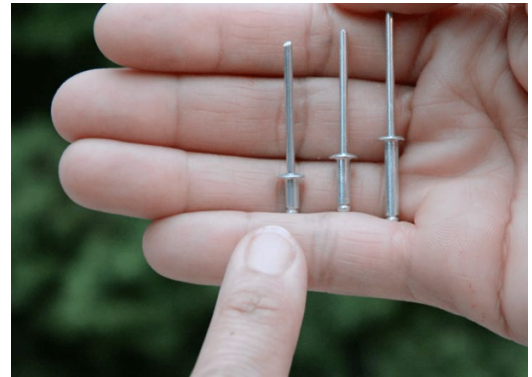
## MATERIALS NEEDED

- Riveting tool
- 2 sheets 1/4" plywood (48"X48")\*
- Medium length rivets
- Rivet washers
- Mesh fabric (or other fabric)
- Sandpaper
- Jigsaw
- Power drill with drilling bits
- Bowl for drawing circles
- Stencils
- Red paint
- Blue Paint
- Roller or brush
- Scissors or rotary blade
- Sewing machine or no-sew tape
- 1×4 boards for the kickstand
- Wood glue
- 2 hinges for the top

## NOTES ON MATERIALS

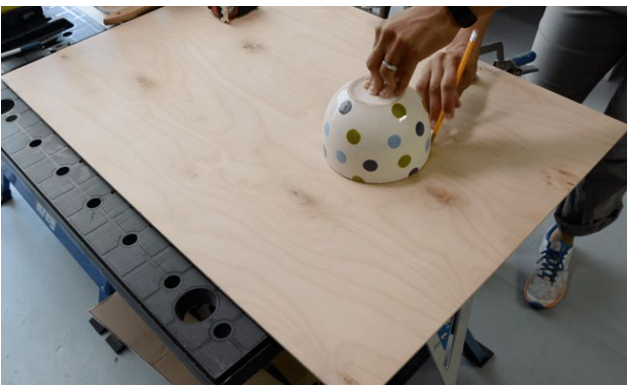
\*You'll need two pieces of 1/4" plywood (48"X48") or one sheet (48"X96"). 1/4" is recommended when joining fabric to wood. In addition, as the rivets aren't very long, the thickest plywood you should use is 1/4".

Use a drill bit the same size as the rivets. On the packet of rivets, it will tell you the size of the rivets, you can use a drill bit of the same diameter.



## DIRECTIONS

1. Cut plywood to 36" wide (plywood come in 48" heights so must be cut down)
2. Trace the circles on the plywood. There's no right or wrong size for the bean bag holes. Just make sure they'll be large enough. A bowl can be used to trace the 6 holes. Center the first hole, measuring down about 7 inches
3. In order to cut out the bean bag holes, first drill a hole in the circle to insert the jigsaw blade to begin cutting.





4. Because the plywood is thin, you'll have to add a board to the top. Glue can be by itself, but it's best to use glue *and* screws to hold it together. This board will be the board upon which to attach the hinges for the kickstands.



5. If you don't have a sewing machine, no worries. You may use no-sew tape. If you're using mesh, you'll need to use a long zigzag stitch.

The wooden circles that were cut from the board can be used as a template to cut out 12 mesh circles.

Also cut 12 long strips of mesh that would also make up the pockets.

Fold the mesh strips in half and use a long zigzag stitch to sew together the one edge. If you don't have a sewing machine, no problem. Just use no-sew fabric tape to join fabric together.

Then use the zigzag stitch to join a mesh circle onto the end.



6. Paint the wood and set the boards aside to dry to avoid the mesh sticking to it. A paint roller will make this job go much faster.



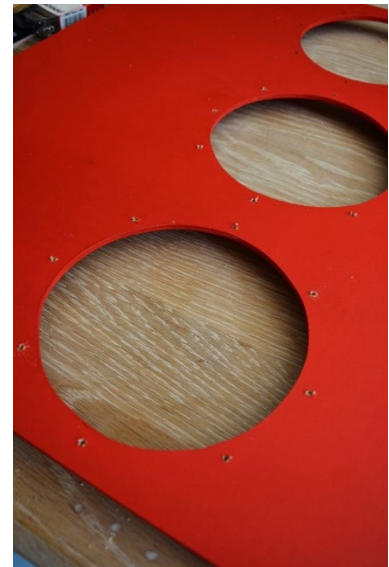


7. Before drilling holes for the rivets, cut 1×4 boards to make the kickstand.

Wood glue, screws, or both can be used to fasten it together.

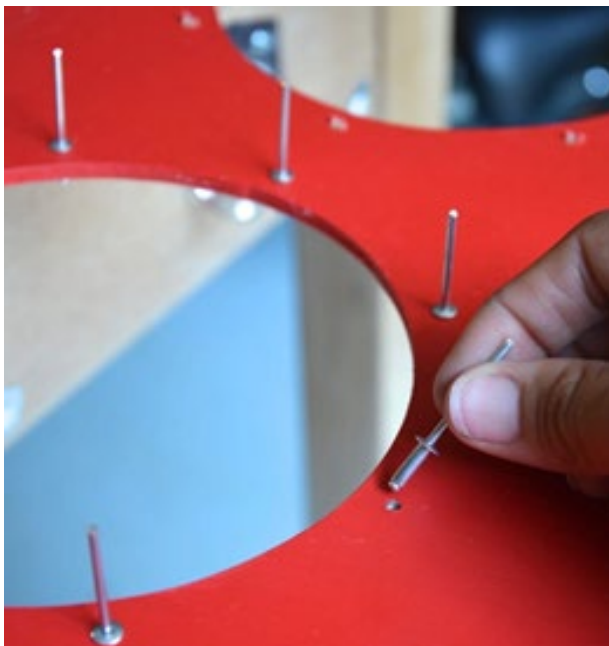
The kickstand should be a bit shorter than the 36" bean bag boards so that the bean bag game rests at an angle when set up.

8. Before drilling the holes for the rivets, place a piece of scrap wood underneath the plywood to prevent tear out on the other side from drilling. Drill 8 holes around each circle: at 12, 3, 6, and 9 o'clock, and spaced evenly between those points.



9. Medium length rivets work best for ¼" plywood.

Simply insert them into the holes and hook the mesh fabric onto the rivets. If you're using another type of fabric, just create small holes to hook onto the fabric.





Be sure to hold the washers in place  
Riveting is a 3-step process: you hold the washer on, slide the riveter over the rivet, then squeeze 1-2 times until you hear a "POP."

As you squeeze the handles of the riveter, the rivet will begin to expand, pulling the washer tight and secure against the mesh.

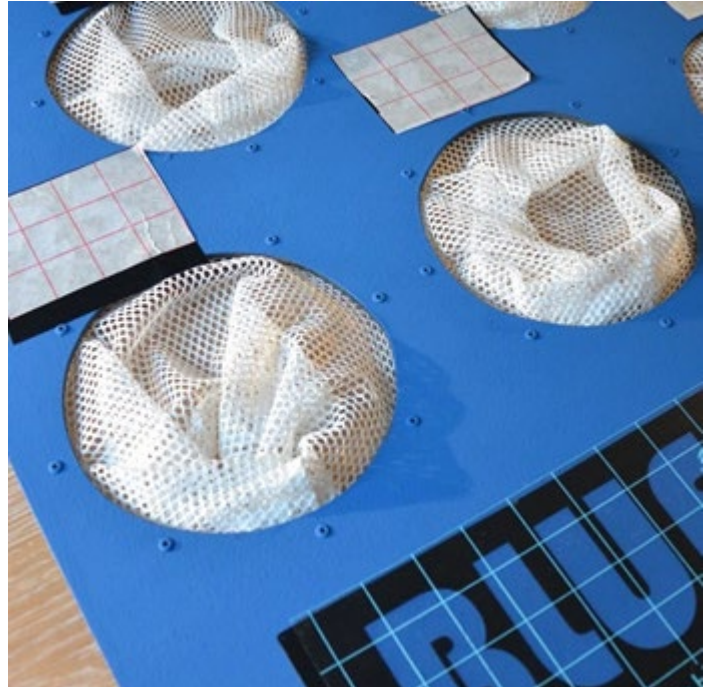
With a couple of squeezes, the long rivet snaps off, leaving the fabric secured to the wood.



10. After attaching a bunch of rivets, you'll be left with rivets showing on your project. If that's the look you're going for, great! If not, painting the rivets will blend them in, making the bean bag toss look clean and seamless.



11. Stencil on the point values. You can use ready-made stencils to add point values and things like RED TEAM and BLUE TEAM.



12. Attach the kickstand. On the ends of the kickstand, attach a hinge to each edge. Then, attach the other side of the hinge to the bean bag game.



Source: <https://thriftdiving.com/diy-backyard-bean-bag-toss-game/>

# How to play Bean Bag Toss

## Setup:

Place both boards side by side a few feet apart. Decide how far the bean bag boards should be placed from the tossing line. (For older Children, place the boards farther apart for more of a challenge.) Use a rope (or another object) to mark the tossing line. Each player takes 3 bags of the same color.

## Game Play:

The game is played in two full rounds and both players will have a chance to go first. For two players, each player choses one of the boards. Each player tosses their bean bags at their board.

### Round 1

One player tosses all three of their bean bags towards their bean bag board. Add up the score and mark it down.

The next player now takes their turn and marks down their score.

### Round 2

The second player starts the round by tossing their bean bags and adding the new score to their previous score.

The other player now takes their turn and does the same.

## End of the Game:

The player (or team) with the highest score wins. In case of a tie, play one more round.

## Team Play:

Divide into teams of equal numbers of players. Each team is assigned a board to throw toward. Play as many rounds as there are players with teams alternating play and letting each player have a turn at being the first to toss.



Image sourced from: <https://thriftdiving.com/diy-backyard-bean-bag-toss-game/>